



1991 CHALLENGER 601-3A/ER
N622WZ S/N 5084



GUARDIANJET

1991 CHALLENGER 601 3A

(with EXTENDED RANGE TANK)

N622WZ S/N 5084



OFFERED AT: \$1,750,000

HISTORY:

Certification Date: Nov 15, 1990

Operated per Part 91

No Known Damage

AVAILABLE: IMMEDIATELY

WHY THIS AIRCRAFT WILL BE THE NEXT CHALLENGER TO SELL: “Buy and Fly Condition”

IMPORTANT AIRCRAFT FEATURES

- **Significant available spare parts, test equipment , and inventory (Includes consumable and major items)**
- **Equipped with the Extended Range Fuel Tank**
- **Only two owner/operators in its history**
- **Excellent exterior paint**
- **Beautiful interior in excellent condition**
- **Cabin includes upgraded cabin soundproofing and insulation**
- **XM Radio**
- **Aircell Axxess Satellite Phone System**

CURRENT INSPECTIONS & AVIONICS HIGHLIGHTS

- **Fresh 12/24/36 month inspections (Completed in September 2013)**
- **Freshly renewed Honeywell HAPP avionic warranty programs**
- **Freshly renewed Bombardier Maintenance Manuals**
- **Excellent Log Books (Audited in 2011)**
- **Honeywell GTCP36-150 APU (Recently upgraded) and enrolled on MSP**
- **Honeywell NZ-2000 with the WAAS/LPV Upgrade**
- **Aircraft Main Brakes all have approximately 250 landings since new**
- **CMC Electronic Flight Bags have GPS and XM Weather**

STATUS: As of November 04, 2013

TOTAL TIME: 8,159.4

LANDINGS: 3,420

ENGINES: General Electric CF34-3A2

	#1	#2
Total Time Since New:	8,024.4	8,009.1
Cycles Since New:	4,074	4,075
Last Overhaul:	5,684.5	5,672.1
Hot Section Due:	8,684.5	8,672.1
Overhaul Due:	11,684.0	11,672.0
Serial Number:	350413	350420

APU: Garrett GTCP 36-150 (CL)

Serial Number: P-274C

Time Since New: 6,568

Last Hot Section: 5,321

Hot Section Inspection Due: 8,321

(APU was recently upgraded to the -150 and is enrolled on MSP)

WEIGHT:

MAX RAMP WEIGHT:	45,250 Lbs.	MAX TAKE-OFF WEIGHT:	45,100 Lbs.
MAX LANDING WEIGHT:	35,000 Lbs.	MAX ZERO FUEL:	31,000 Lbs.
EMPTY WEIGHT:	25,947.8 Lbs.	BOW (Over Water):	27,199.05 Lbs.
FUEL CAPACITY:	17,900 Lbs.		

CAPABILITIES:

RVSM RNP 5/10 MNPS FM IMMUNITY
8.33 SPACING Fireblocked

AVIONICS & COCKPIT



AVIONICS: (Honeywell SPZ-800 five-tube Avionics Suite)

AFIS: Honeywell Satellite AFIS
AIR DATA COMPUTERS: Dual Honeywell AZ-810 Air Data Computers
AUTOMATIC DIRECTION FINDER: (2) Collins ADF-60 ADF
AUTOPILOT / FLIGHT DIRECTOR: Sperry SPZ-800 Autopilot w/ dual DFZ-800 Flight Guidance Computers
COCKPIT VOICE RECORDER: L3 Communications A-100-83 CVR (30 minutes)
COMMUNICATIONS: (3) Collins VHF-22C Comms with 8.33 MHz Spacing
DISTANCE MEASURING EQUIPMENT: (2) Collins DME-42 DME
ELECTRONIC FLIGHT INFORMATION SYSTEM: Honeywell EDZ-815 5-tube EFIS System
EMERGENCY LOCATOR TRANSMITTER: ARTEX C406-N ELT with nav interface
FLIGHT DATA RECORDER: L3 Communications F800 FDR
FLIGHT MANAGEMENT SYSTEM: (2) Honeywell NZ-2000 FMS w/ 6.1 Software (WAAS/LPV Capable)
GLOBAL POSITIONING SYSTEM: (2) Honeywell 12-channel GPS Receivers (HG2021GD02)
HIGH FREQUENCY RADIO: (2) Collins HF-9030 HF transceivers with SELCAL
LIGHTNING DETECTION: Yes
LONG RANGE NAVIGATION: (3) Honeywell Laserref II IRUs and Honeywell Lasertrak long-range nav
NAVIGATION: (2) Collins VIR-32 NAV Receivers (w/ FM Immunity)
RADAR ALTIMETER: Honeywell RT-300 Radio Altimeter System
SELCAL: 2 Channel Motorola SELCAL decoder
TERRAIN AWARENESS AND WARNING SYSTEM: Allied Signal EGPWS
TRAFFIC COLLISION AVOIDANCE SYSTEM: Collins TCAS II
TRANSPONDER: (2) Collins TDR-90 Transponders with Enhanced Flight ID
WEATHER RADAR: Honeywell Primus-880 Weather Radar with 18 inch dish

ADDITIONAL FEATURES



Honeywell NZ-2000 Upgraded w/ WAAS/LPV Capability
 Dual CMC Electronic Flight Bags w/ XM Weather & GPS
 EVAS (Emergency Vision Assurance System)
 (4) 100V Outlets
 Electric MSA Window Shades
 Extended Range Fuel Tank
 Pulselight System
 Additional Refueling Panel
 Only Two Owners/Operators Since New
 Excellent Exterior Paint Condition
 Beautiful Interior in Excellent Condition
 Cabin has upgraded soundproofing / insulation

Significant spare parts and equipment inventory available

CABIN ENTERTAINMENT & COMMUNICATIONS

ENTERTAINMENT

XM Radio
CD Player

COMMUNICATIONS

Aircell Axxess Iridium (2 channel) Satellite Phone



MAINTENANCE PROGRAMS & INSPECTIONS STATUS



MAINTENANCE & INSPECTIONS

- APU upgraded to -150 & enrolled on MSP
- Honeywell Avionics enrolled on HAAP
- CAMP Maintenance Tracking System
- Gear Overhaul March 2010 at Midcoast Aviation
- 20 Year Airframe Inspection March 2010 at Midcoast Aviation
- Maintained per Chapter 5
- Main brakes have approximately 250 landings since new
- Excellent and complete logs – Fully audited in 2011
- Freshly renewed Bombardier Maintenance Manuals

<i>INSPECTION</i>	<i>LAST COMPLETED</i>	<i>NEXT DUE</i>
300 Hr	8157	8457
600 Hr	7905	8538
1200 Hr	7909	9109
2400 Hr	6784	9184
3000 Hr	5818	8784
4800 Hr	4504	9304
9600 Hr	N/A	9600
12 Month	09/19/2013	09/09/2014
24 Month	12/21/2011	12/14/2013
36 Month	09/19/2013	09/08/2016
48 Month	12/10/2009	12/28/2013
60 Month	03/11/2010	3/11/2015
96 Month	08/01/2006	08/01/2014
120 Month	03/11/2010	03/11/2020
180 Month	05/11/2010	
240 Month Airframe Inspection	05/11/2010	
Landing Gear Overhaul	03/11/2010	03/11/2020

INTERIOR Forward Cabin

INTERIOR DESCRIPTION

Original Interior

The executive 9 passenger configuration features a forward cabin, right-side, four-place conference group around a large fixed table, opposite a spacious credenza. The aft cabin features a left-side three-place divan opposite two-place club seating. The seats are upholstered with brown leather and the divan is covered with a multi-shaded brown fabric. The woodwork is tiger maple with a high gloss finish. The plating is bronze and the table's reverse-side fold-up leaves and credenza inserts are dark brown leather.



Forward Cabin looking Aft

INTERIOR
Aft Cabin



Mid Cabin looking Aft

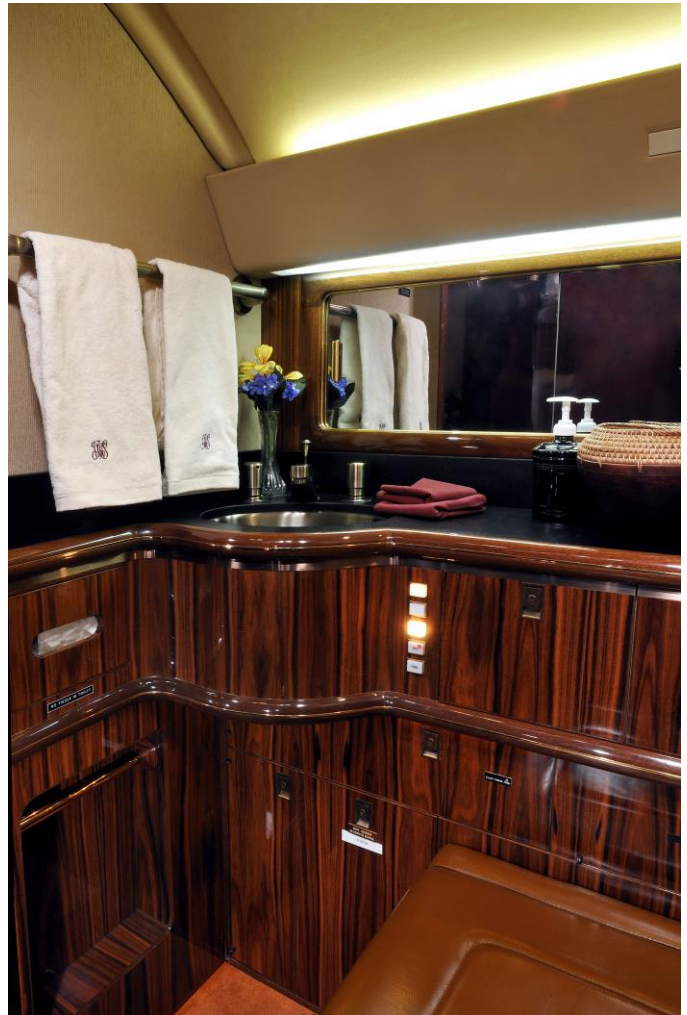


Aft Cabin looking Forward

GALLEY & LAVATORY



Forward Galley looking aft



Aft Lavatory

GALLEY DESCRIPTION (*Forward Galley*)

- Microwave Oven
- Convection Oven
- 10-Gallon Water Supply
- Coffee Maker

LAVATORY DESCRIPTION

- Spacious Aft Lavatory
- Externally Serviced

EXTERIOR

EXTERIOR DESCRIPTION

(Painted Sept 2006 at Jet Aviation, PBI with Jet Glow Paint)

The upper fuselage is Matterhorn White. The lower fuselage is Sandalwood-tan. The accent stripes are black and Sandalwood-tan



This aircraft is being brokered by Guardian Jet, LLC. Prospective purchasers are encouraged to conduct their own independent pre-purchase inspection as Guardian Jet, LLC makes no representations as to the airworthiness of the aircraft or the accuracy of the above information. Specifications subject to verification upon inspection. Aircraft subject to prior sale.

2013 11 25 /SS