



GULFSTREAM G450

N455KH S/N 4120

Specifications and Summary

2008 Gulfstream G450



OFFERED AT: \$11,995,000

AIRCRAFT HIGHLIGHTS:

- Starlink Internet
- Lux Stream KU and GOGO L3
- Enrolled in Engine & APU Programs
- Enrolled in CASP and HAPP Programs
- Enhanced Soundproofing
- 14 Pax with AFT Galley
- 2018 Paint
- Enhanced Navigation / Synthetic Vision

STATUS: As of April 15, 2025

TOTAL TIME: 6,678 hours
LANDINGS: 2,515 cycles
ENGINES: Rolls Royce TAY Mk 611-8C

	Engine 1	Engine 2
Serial Number:	85241	85240
Total Time Since New:	6,361	6,361
Cycles Since New:	2,515	2,515

Engines enrolled on Rolls Royce Corporate Care Enhanced

APU: Honeywell GTCP36-150(GIV)
Serial Number: P-235
TSN: 4,958
Cycles: 5,652

APU Enrolled on MSP Gold

CAPABILITIES:

FANS 1/A	BRNAV	Synthetic Vision	FM Immunity	RVSM
CPDLC	VNAV	8.33 Spacing	HUD w/EVS	MNPS
ADS-B Out	RNP-10	TCAS 7.1	Auto Throttles	WAAS / LPV

AVIONICS & COCKPIT



AVIONICS: Honeywell Primus Epic PlaneView® Cockpit with Enhanced Navigation Package

AIR DATA COMPUTER: Triple Honeywell AZ-200 Air Data Modules
AUTOMATIC DIRECTION FINDER: Dual DF-855 ADF Modules
AUTOTHROTTLES SYSTEM: Honeywell Auto Throttle
COCKPIT PRINTER: TP4840 Thermal Cockpit Printer
COCKPIT VOICE RECORDER: Universal Avionics
COMMUNICATIONS: Dual TR-865A and third NC-860A Nav/Com LRMs
DIGITAL CLOCK: Dual Digital Clocks
DISTANCE MEASURING EQUIPMENT: Dual Honeywell DM-855 DME Modules
ELECTRONIC FLIGHT INSTRUMENT SYSTEM: Four Honeywell DU-1310 Flat Panel Displays
EMERGENCY LOCATOR TRANSMITTER: Artex C406 ELT
ENHANCED VISION SYSTEM: Honeywell / Kollsman Enhanced Visual Guidance System
FLIGHT DATA RECORDER: Universal Avionics Flight Data Recorder
HEADS UP DISPLAY: Rockwell Collins HUD System
HIGH FREQUENCY RADIO: Dual Rockwell Collins HF-9034A Receiver/Transmitters
LIGHTNING SENSOR: LSZ-860 Lightning Sensor System
LONG RANGE NAVIGATION: Triple Honeywell LASEREF V Micro IRUs
NAVIGATION: Dual NV-875A Nav Modules
RADIO ALTIMETER: Dual Honeywell Radio Altimeters
TRAFFIC COLLISION ALERT AND AVOIDANCE SYSTEM: 3000SP TCAS Processor with Change 7.1
TERRAIN AWARENESS and WARNING SYSTEM: Enhanced Ground Proximity Module
TRANSPONDER: Dual Honeywell Transponders with version 7.1 & ADS-B Out
STANDBY ATTITUDE INDICATOR: L3 Gh-3100 ESIS Standby Attitude/Altitude/Airspeed
WEATHER RADAR: Honeywell Weather Radar with Dual Weather Radar Controllers

CABIN ENTERTAINMENT & COMMUNICATIONS

ENTERTAINMENT

- Airshow 4000
- 20" Forward LCD Monitor
- 17" Aft LCD Monitor
- (6) 7" Rosen Monitors
- Electric window shades

COMMUNICATION

- Starlink Internet
- Aircell Axxess II
- Lux Stream KU and GOGO L3



MAINTENANCE PROGRAMS & INSPECTIONS STATUS



MAINTENANCE & INSPECTIONS

- Airworthiness Date: April 04, 2008
- Engines Enrolled on RRCC Enhanced
- APU Enrolled on MSP Gold
- Enrolled in CASP and HAPP Programs

Other ASC Compliance:

ASC 037B - Synthetic Vision
 ASC 059C - PlaneView Enhanced Nav Package
 ASC 077 - TCAS 7.1
 ASC 079B - Automatic Dependent Surveillance
 ASC 094A - Nose Landing Gear Electrical Harness Installation
 ASC 907 - PlaneView Master Operating System Software Upgrade

<i>INSPECTIONS</i>	<i>LAST COMPLETED</i>	<i>NEXT DUE</i>
12 Month Inspection	01/2025	01/2026
24 Month Inspection	02/2024	02/2026
48 Month Inspection	02/2024	02/2028
72 Month Inspection	02/2023	02/2029
96 Month Inspection (8C)	02/2024	02/2032
144 Month Inspection (12C)	01/2024	01/2036

INTERIOR

INTERIOR DESCRIPTION

(2019 Interior was recently refurbished with new coverings of panels, PSU, upper/lower sidewalls and ceiling, new carpet, new divan covering and reconditioned seats.)

This beautiful 14 passenger configuration features a forward four-place club, followed by a mid-cabin 4-place couch opposite two club seats, and an aft 4-place conference group opposite a credenza. The aft galley features a high temperature oven, microwave oven, coffeemaker and sink.



Forward-Cabin Looking Aft

INTERIOR Forward Cabin



Forward-Cabin Looking Forward



INTERIOR Mid-Cabin



Mid-Cabin Looking Aft



Mid-Cabin Looking Forward

INTERIOR Aft-Cabin

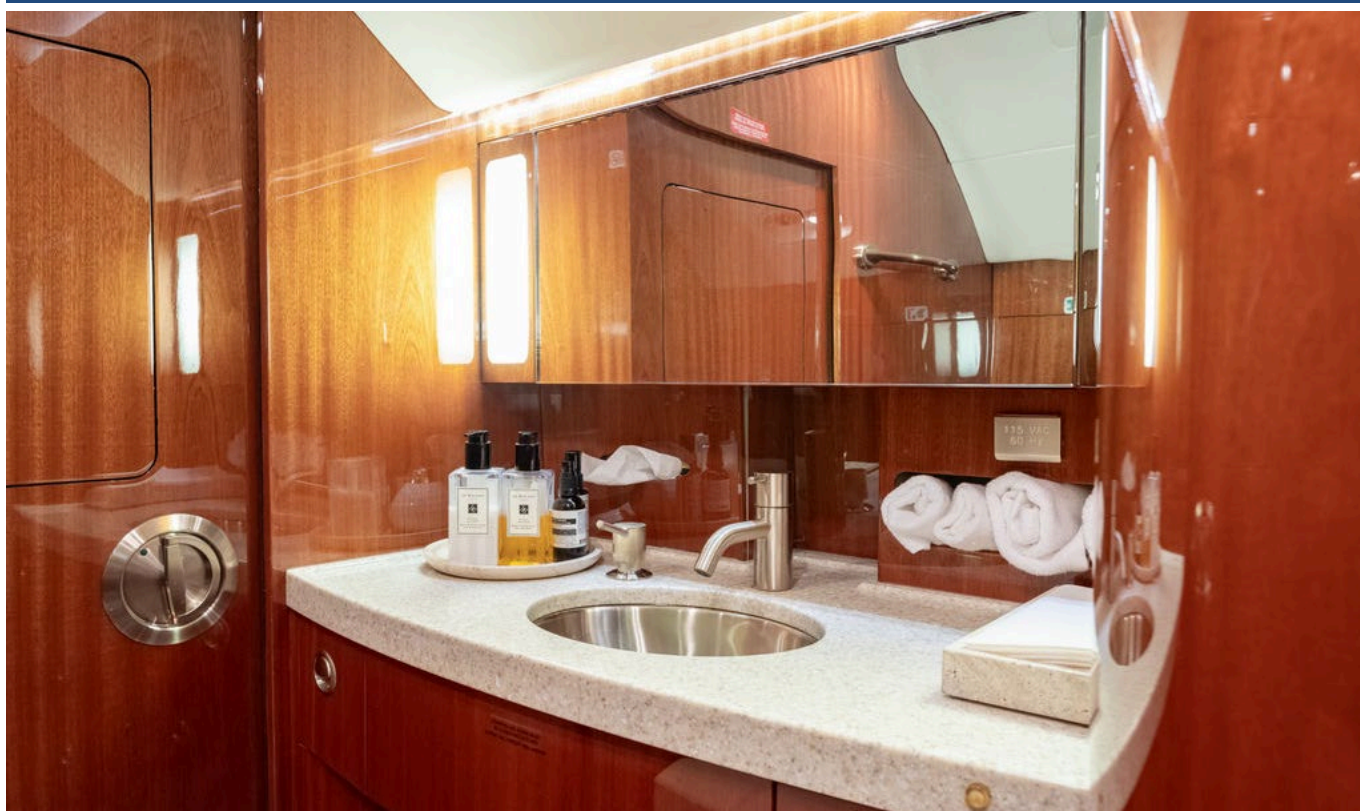


Aft Cabin Looking Aft.



Aft-Cabin Looking Forward

AFT LAVATORY



AFT GALLEY

AFT GALLEY DESCRIPTION

High Temp Oven
Microwave Oven
Coffee Maker



EXTERIOR

EXTERIOR DESCRIPTION

(2018 Paint)

Overall white fuselage with light accents on tail and wing tips.



This aircraft is being brokered by Guardian Jet, LLC. Prospective purchasers are encouraged to conduct their own independent pre-purchase inspection as Guardian Jet, LLC makes no representations as to the airworthiness of the aircraft or the accuracy of the above information. Specifications subject to verification upon inspection. Aircraft subject to prior sale.

2025 04 17 / SL