



2014 Dassault Falcon 7X N939TY S/N 244

Specification & Summary



2014 Dassault Falcon 7X N939TY S/N 244



OFFERED AT: Make Offer

AIRCRAFT HIGHLIGHTS:
One Owner Since New

AVAILABILITY: Immediately

STATUS: As of November 7, 2016

TOTAL TIME: 446

LANDINGS: 179

ENGINES: Pratt & Whitney Canada Corp. PW307A

	#1	#2	#3
Total Time Since New:	446	446	446
Cycles Since New:	179	179	179
Midlife Due:	3,600	3,600	3,600
Overhaul Due:	7,200	7,200	7,200

WEIGHT:

MAX RAMP WEIGHT: 70,200 Lbs.

MAX LANDING WEIGHT: 62,400 Lbs.

MAX TAKE-OFF WEIGHT:

MAX ZERO FUEL:

70,000 Lbs.

41,000 Lbs.

CAPABILITIES:

Baseline EASY II (SB-300)

CPDLC Wiring Provisions (SB-299-4)

Enhanced Nav WAAS/LPV (SB-301)

Autothrottle

ADS-B (Out) (SB-302)

ARINC

ADDITIONAL EQUIPMENT

- Honeywell LP-860 Lightning Sensor
- Quick Access Recorder
- 115 VAC 60Hz 2000VA Inverter
- Goodrich Ice Detector

CABIN ENTERTAINMENT & COMMUNICATIONS

ENTERTAINMENT

- Falcon Cabin HD+ Audio/Video Distributor
- (1) 10.6" Touchscreen Entertainment Control
- (2) 22" HD LED Bulkhead Monitors
- (7) Plug-in Monitors

COMMUNICATIONS

- Inmarsat Aero H+ / Swift Broadband
- Honeywell HD-710 Satellite Data Unit
- Aircell Cordless Handset

AVIONICS



AVIONICS: Honeywell EASy System

AFIS: Honeywell SATAFIS Airborne Flight Information System with Miltop TP-4840 Printer

AIR DATA SYSTEMS: Four Goodrich SmartProbes Systems

AUTOMATIC DIRECTION FINDER: Dual Honeywell DF-855 ADF Modules

AHRS: Single 2-Channel AHRS

AUTO THROTTLE: Auto throttle System

COCKPIT VOICE RECORDER: Dual AR-Combi Units (120 Min. Recording CVR)

COMMUNICATIONS: Triple Honeywell TR-866B VHF Radio Modules

DISTANCE MEASURING EQUIPMENT: Dual Honeywell DM-855 DME Modules

ELECTRONIC FLIGHT BAG: Dual CMC CMA-1100 Electronic Flight Bags

EMERGENCY LOCATOR TRANSMITTER: Honeywell Rescu 406AF ELT

EGPWS: Honeywell Enhanced Ground Proximity Warning System

FLIGHT DATA RECORDER: Dual Honeywell AR-Combi Recorders (88 Parameters FDR)

FLIGHT MANAGEMENT SYSTEM: Triple Honeywell FMS

GLOBAL POSITIONING SYSTEM: Dual Global Positioning Systems

HIGH FREQUENCY: Dual Honeywell KHF-1050 HF Communication Systems

INERTIAL REFERENCE SYSTEM: Triple Honeywell LASEREF V Micro Inertial Reference Unit (MIRU)

NAVIGATION: Dual Honeywell NV-877A Navigation Modules (SBAS Capable)

RADAR ALTIMETER: Dual Honeywell KRA-405B Digital Radar Altimeters

SELCAL: Honeywell Selcal Decoder

STANDBY ATTITUDE: Honeywell Standby LCD Indicator

TRANSPONDER: Dual Honeywell XS-857A Mode S Transponders ADS-B Out Ready

TRAFFIC COLLISION AVOIDANCE SYSTEM: TCAS 9000 System 7.1

WEATHER RADAR: Honeywell WU-880 Weather Radar System

INTERIOR

INTERIOR DESCRIPTION

(Original Interior By Dassault – Little Rock, AK)

This 14 passenger interior features a forward double club, a mid-cabin dining table facing a credenza and two 3-place divans in the aft cabin. The aircraft is also equipped with a forward galley as well as forward and aft lavatories.



Fwd Cabin looking Aft

INTERIOR



Mid Cabin looking Aft



Mid Cabin looking Forward

INTERIOR



Aft Cabin Looking Aft

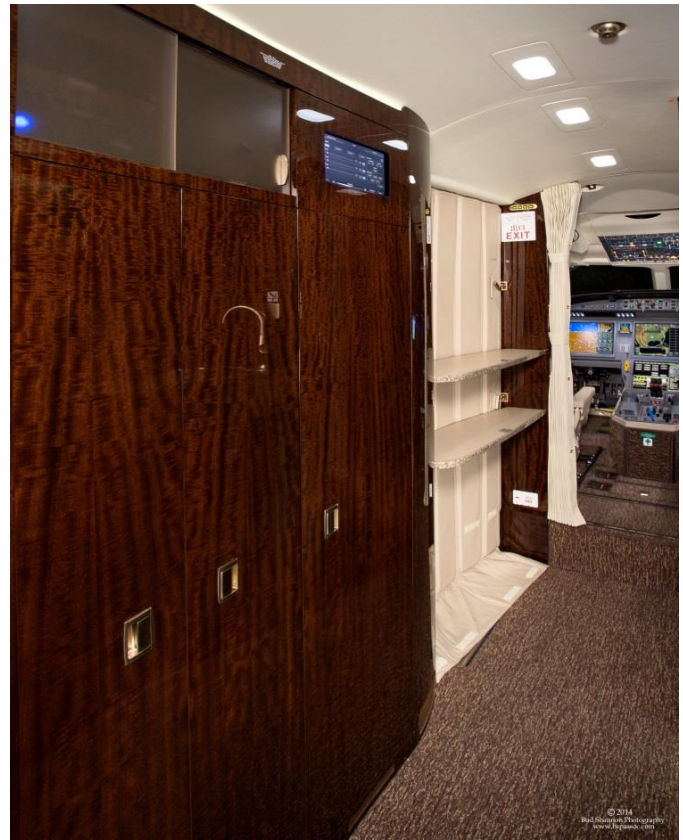


Aft Cabin looking Forward

FORWARD GALLEY



Forward Galley



Forward Entryway

GALLEY DESCRIPTION

- Cold Storage Chest
- Multiple Storage Compartments
- Microwave Oven
- High Temperature Oven
- Nespresso Machine

LAVATORIES



Forward Crew Lavatory



Aft Lavatory

LAVATORIES DESCRIPTION

30" Forward Crew Lavatory
Aft Passenger Lavatory

EXTERIOR

EXTERIOR DESCRIPTION

*(Original Paint by Dassault – Little Rock, AK)
Tail number changed from N1227W to N939TY.*

Matterhorn White Fuselage



This aircraft is being brokered by Guardian Jet, LLC. Prospective purchasers are encouraged to conduct their own independent pre-purchase inspection as Guardian Jet, LLC makes no representations as to the airworthiness of the aircraft or the accuracy of the above information. Specifications subject to verification upon inspection. Aircraft subject to prior sale.

2017 02 10 / CC