



Gulfstream G550

N586RW S/N 5448

Specifications and Summary



2014 Gulfstream G550

N586RW S/N 5448



OFFERED AT: MAKE OFFER

AIRCRAFT HIGHLIGHTS:

FANS 1/A, ADS-B Out, TCAS 7.1
 Synthetic Vision
 Head Up Display / Enhanced Vision
 System Inmarsat Swift Broadband
 Gogo ATG 4000 High Speed Internet
 SmartStem Tire Pressure Monitoring
 Talon LED Taxi and Landing Lights
 Gulfstream Extended Warranty

STATUS: As of December 12th, 2019

TOTAL TIME: 3,674.9 Hours
LANDINGS: 1,086
ENGINES: Rolls Royce BR-700-710C4-11

	LEFT	RIGHT
TOTAL TIME SINCE NEW:	3,674.9	3,674.9
CYCLES SINCE NEW:	1,086	1,086
SERIAL NUMBER:	16013	16014

APU: Honeywell RE220 (G550)
Serial Number: P-781
TSN: 1,702 Hours

WEIGHT:

MAX RAMP WEIGHT:	91,400 Lbs.	MAX TAKE-OFF WEIGHT:	91,000 Lbs.
MAX LANDING WEIGHT:	75,300 Lbs.	MAX ZERO FUEL:	54,500 Lbs.
BOW (Over Water):	48,556 Lbs.	MAX USABLE FUEL:	41,300 Lbs.

CAPABILITIES:

FANS 1/A+ / CPDLC	RNP 0.1 Capability	Jeppesen Electronic Charts
Synthetic Vision	Auto Throttles	WAAS/LPV
HUD / EVS	Quick Access Recorder	TCAS 7.1
ADS-B Out Version 2	Emergency Descent Mode	XM Weather

FLIGHT DECK



COMPLETED ASCs

Enhanced Navigation (ASC 084D)
ADS-B Out Version 2 (ASC 105C)
Synthetic Vision (ASC 61B)
Micro Quick Access Recorder (ASC 71A)
XM Weather (ASC 085B)
FANS Latency Timer (ASC 912B)

AVIONICS & ADDITIONAL ITEMS

AVIONICS

Honeywell Primus Epic Planeview – ASC 912 Enhanced Navigation

AIR DATA COMPUTER: Triple Honeywell AZ-200 Air Data Modules

AUTOMATIC DIRECTION FINDER: Dual Honeywell DF-855 ADF

AUTO THROTTLES: Honeywell Auto Throttle System

AUTOPILOT / FLIGHT DIRECTOR: Honeywell Planeview System

COCKPIT VOICE RECORDER: Universal CVR-120R Cockpit Voice Recorder (120 minutes)

COMMUNICATIONS: Dual Honeywell TR-865A and Third Honeywell NC-860A Comm Modules

DISTANCE MEASURING EQUIPMENT: Dual Honeywell DM-855 Distance Measuring Equipment

ELECTRONIC FLIGHT INFORMATION SYSTEMS: Honeywell Planeview – 4 Display EFIS

EMERGENCY LOCATOR TRANSMITTER: Artex C-406N Emergency Locator Transmitter

ENHANCED VISION SYSTEM: Kollsman EVS System

ENHANCED GROUND PROXIMITY WARNING SYSTEM: Dual Honeywell EGPWM-100 Modules

FLIGHT DATA RECORDER: Universal FDR-25 Flight Data Recorder

FLIGHT MANAGEMENT SYSTEM: Honeywell Planeview System

GLOBAL POSITIONING SYSTEM: Dual Honeywell GPS Modules with WAAS

HIGH FREQUENCY: Dual Rockwell Collins HF-9034A HF Comm Radios

HEADS UP DISPLAY: Rockwell Collins VGS System with EVS

LONG RANGE NAVIGATION: Triple Honeywell Laseref VI Micro IRUs

NAVIGATION: Dual Honeywell NV-875A Nav Radios with VOR, ILS, and Datalink

RADIO ALTIMETER: Dual Honeywell KRA-405B Radio Altimeters

TRAFFIC COLLISION AVOIDANCE SYSTEM: ACSS TCAS 3000SP with Change 7.1 (ASC 103)

TRANSPONDER: Dual Honeywell XS-858B Mode S Transponders with ADS-B Out Version 2

WEATHER RADAR: Honeywell Primus WU-880 Color Weather Radar

ADDITIONAL ITEMS

Electric Window Shades

External Camera System

Securaplane 500 Security System

30 Gallon Potable Water Tank

UV Water Sterilization System

115VAC/60Hz Electrical Outlets

USB Charging Ports in the Cockpit and Cabin

SmartStem Tire Pressure Monitoring

Talon LED Taxi and Landing Lights

Cockpit Jumpseat

CABIN ENTERTAINMENT & COMMUNICATIONS

ENTERTAINMENT

- Rockwell Collins ACMS Cabin Management System
- Airshow 4000
- Dual Blu-Ray Players
- Forward and Aft Cabin Bulkhead Monitors
- Mid-cabin Credenza Monitor
- (3) External Cameras



COMMUNICATIONS

- Inmarsat Swift Broadband
- Gogo ATG-4000 High Speed Internet
- Satcom Direct Router (SDR)
- Aircell Axxess Iridium Satellite Phone System
- (2) Wired Phone Handsets and (3) Wireless Phone Handsets



MAINTENANCE PROGRAMS & INSPECTIONS STATUS



MAINTENANCE & INSPECTIONS

- Certificate of Airworthiness: 10/08/2013
- Chapter 5 Maintenance Program
- CMP Maintenance Tracking
- Airframe Structural Warranty (Expires 02/2034)
- Gulfstream Extended Warranty (Expires December 2020)

INTERIOR Forward Cabin

INTERIOR DESCRIPTION

(Original Interior completed by Gulfstream – Savannah, CA)

This luxurious sixteen (16) passenger floor plan features a three-zone cabin with a forward crew rest, forward crew lavatory, forward galley, electric window shades, aft passenger lavatory, and an in-flight accessible baggage bay.

Forward Vestibule: Forward crew closet / storage area. Forward crew lavatory and forward crew rest area.

Forward Galley: Equipped with a microwave, convection oven, dual coffee makers, and a refrigerator.

Forward Cabin: Forward area features 4-place club seating arrangement with two fold-out side ledge table.

Mid Cabin: Right four-place conference group opposite a credenza.

Aft Cabin: Dual four-place divans.

Forward and Aft Lavatories: Forward & aft vacuum toilets with outside servicing capability.



Forward Cabin looking Aft

INTERIOR

Forward Cabin



Right Hand Seat Facing Forward



Forward Cabin looking Forward

INTERIOR

Mid Cabin



Mid Cabin looking Aft



Mid Cabin looking Forward

INTERIOR

Aft Cabin



Aft Cabin looking Aft

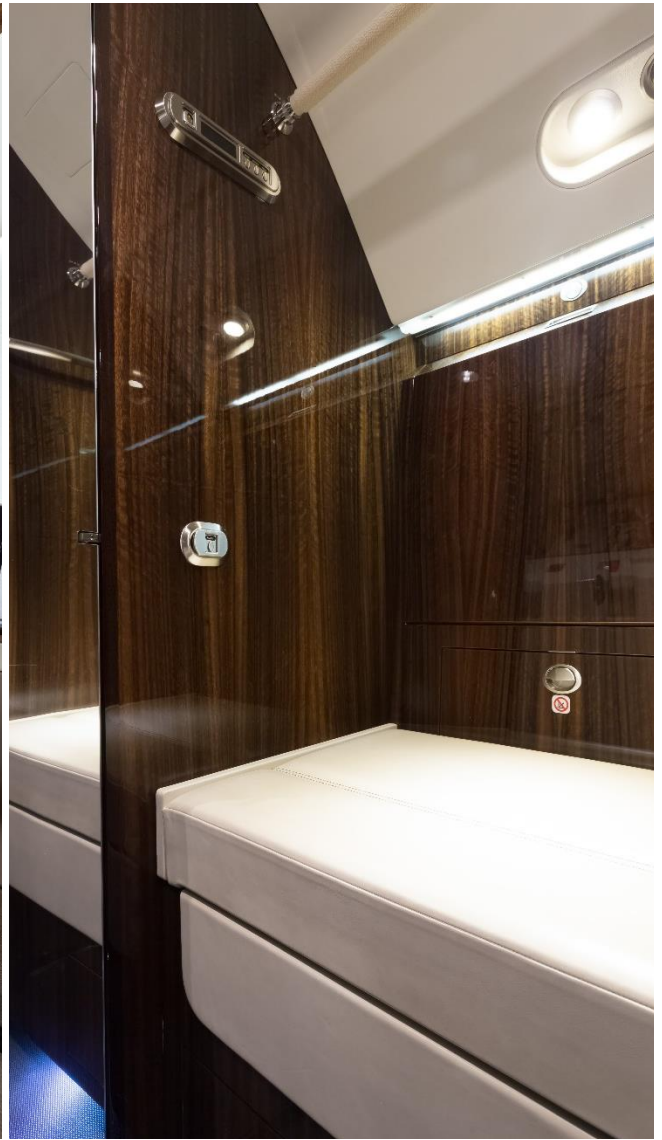


Aft Cabin looking Forward

FORWARD CREW REST & LAVATORY



Forward Crew Rest

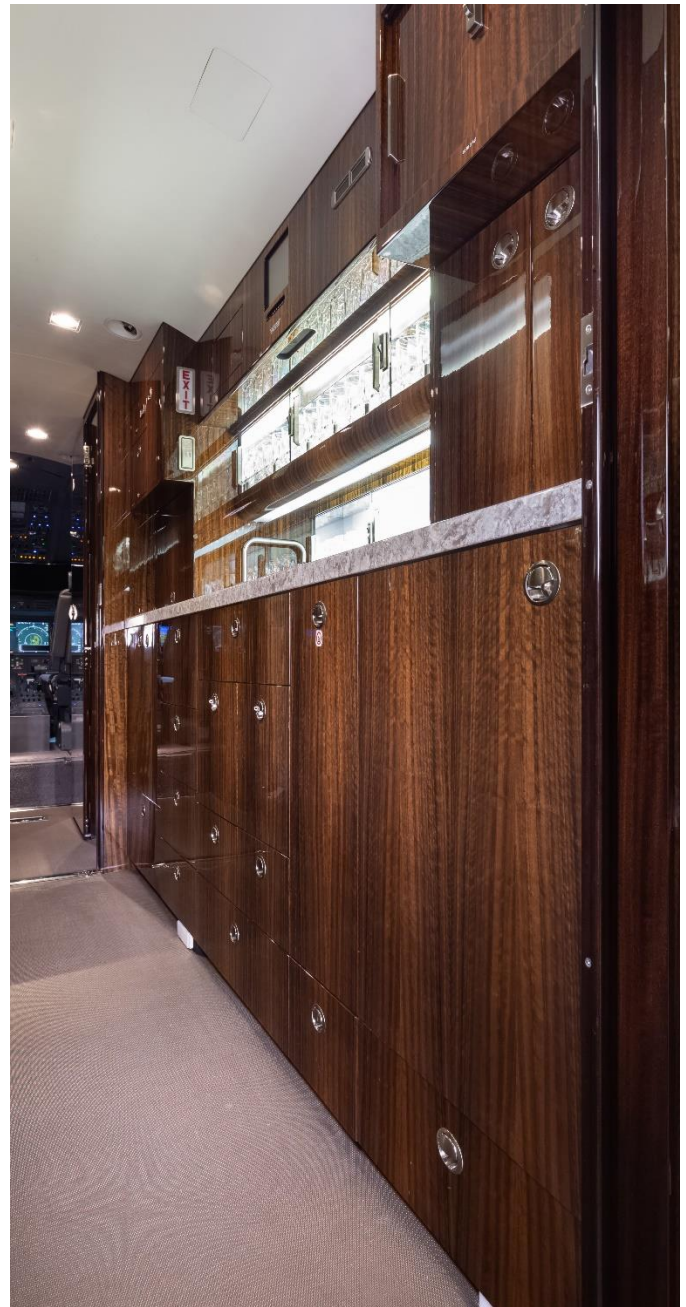


Forward Lavatory

FORWARD GALLEY & AFT LAVATORY



Aft Cabin Lavatory



Forward Galley

FORWARD GALLEY DESCRIPTION

Microwave Oven
High Temperature Oven
Dual Coffee Makers
Refrigerator
Ice Drawers

EXTERIOR

EXTERIOR DESCRIPTION

(Original Paint by Gulfstream - Savannah, GA)

Overall Matterhorn White with Red and Grey Stripes



This aircraft is being brokered by Guardian Jet, LLC. Prospective purchasers are encouraged to conduct their own independent pre-purchase inspection as Guardian Jet, LLC makes no representations as to the airworthiness of the aircraft or the accuracy of the above information. Specifications subject to verification upon inspection. Aircraft subject to prior sale.

2019 12 23 / MC
2020 01 03 / MB