



**1999 Gulfstream GIVSP  
N1PG S/N 1374**

## **Specifications and Summary**



# 1999 Gulfstream G-IVSP

## N1PG S/N 1374



**OFFERED AT: \$9,249,000**

*This Fortune 50 owned and operated aircraft represents an outstanding opportunity to own the best equipped and best prepared G-IVSP on the market today.*

- AIRCRAFT HIGHLIGHTS:**
- DU-885 PlaneDeck Display Upgrade
  - FMS 6.1
  - ADS-B (Out)
  - TCAS II with Change 7.1
  - Upgraded to -150 APU
  - No Damage History
  - One Fortune 50 Owner Since New
  - Corporate Care, MSP, HAPP
  - Available Immediately

**STATUS:** *As of October 13, 2014*

**TOTAL TIME:** 6,178  
**LANDINGS:** 3,623  
**ENGINES:** Rolls Royce TAY 611-8 (MSG-3)

	<b>LEFT</b>	<b>RIGHT</b>
<b>TOTAL TIME SINCE NEW:</b>	6,163	6,121
<b>CYCLES SINCE NEW:</b>	3,605	3,587
<b>MID LIFE NEXT DUE:</b>	7,864 / July 2018	7,790 / May 2018
<b>OVERHAUL NEXT DUE:</b>	7,864 / July 2018	7,790 / May 2018
<b>SERIAL NUMBER:</b>	16873	16874

*Engines enrolled in Rolls Royce Corporate Care*

**APU: Honeywell GTCP36-150(G)**  
**Serial Number:** P-654C  
**TSN:** 3,967

**Upgraded to -150 APU at 3,645 TSN**  
*APU enrolled in Honeywell MSP*

**WEIGHTS:**

<b>MAX RAMP WEIGHT:</b>	75,000 Lbs.	<b>MAX TAKE-OFF WEIGHT:</b>	74,600 Lbs.
<b>MAX LANDING WEIGHT:</b>	66,000 Lbs.	<b>BOW (Overwater with 3 Crewmembers):</b>	43,695 Lbs.
<b>BASIC EMPTY WEIGHT:</b>	42,374 Lbs.	<b>MAX ZERO FUEL WEIGHT:</b>	49,000 Lbs.



# FLIGHT DECK



FLIGHT DECK	CAPABILITIES
<ul style="list-style-type: none"> <li>➤ Primus Elite Liquid Crystal Displays and FMS 6.1</li> <li>➤ Honeywell XM Weather Receivers</li> <li>➤ INDS (Electronic) Charts</li> <li>➤ Crew Jumpseat</li> <li>➤ Precise Pulselite System</li> <li>➤ Removable Forward Crew Lav</li> <li>➤ Dual 110AV Electrical Outlets in Cockpit</li> <li>➤ Triple Eros Oxygen Masks</li> <li>➤ Goodrich Ice Detector System</li> </ul>	<ul style="list-style-type: none"> <li>➤ SBAS/LPV</li> <li>➤ ADS-B Out</li> <li>➤ FM Immunity</li> <li>➤ RVSM Capable</li> <li>➤ Electronic Charts</li> <li>➤ BRNAV</li> <li>➤ TCAS II with Change 7.1</li> <li>➤ 8.33 kHz Channel Spacing</li> <li>➤ ADS-C</li> </ul>



Pilot & Copilot Cursor Controller



Dual Server Electronic Charts

## AVIONICS

### AVIONICS

*Honeywell SPZ-8400 EFIS with Primus Elite Liquid Crystal Displays, Cursor Controls and Electronic Charts*

**AIR DATA COMPUTER:** Dual Honeywell AZ-810 ADCs

**AUTO PILOT:** Honeywell SPZ-8400

**AUTO THROTTLES:** SPZ-8400 Performance Auto throttle Computer

**AUTOMATIC DIRECTION FINDER:** Dual Collins Proline IV ADF-462

**COCKPIT VOICE RECORDER:** L3 Communications Solid State CVR (120 minutes)

**COMMUNICATIONS:** Triple Collins VHF-422D w/8.33 Spacing and FM Immunity

**CONTROL DISPLAY UNITS:** Dual Upgraded Honeywell CD-820 CDUs

**DATA ACQUISITION UNITS:** Dual Honeywell DA-884

**DATA LOADER:** Honeywell DL-1000 Data Loader

**DISTANCE MEASURING EQUIPMENT:** Dual Collins DME-442 DME

**ELECTRONIC FLIGHT INFORMATION SYSTEM:** Sperry SPZ-8400 6 units with New DU-885 LCD Displays

**EMERGENCY LOCATOR TRANSMITTER:** Artex 110-406-Nav

**FLIGHT DATA RECORDER:** L3 Communications solid State FDR S800-2000-00 and Micro Quick Access Recorder

**FLIGHT DIRECTOR:** Single Honeywell SPZ-8400

**FLIGHT GUIDANCE COMPUTER:** Dual Honeywell FZ-820

**FLIGHT MANAGEMENT SYSTEM:** Dual Honeywell FMS NZ-2010, version 6.1 with WAAS/LPV GPS

**GLOBAL POSITIONING SYSTEM:** Dual Honeywell HG-2021 Units

**HIGH FREQUENCY:** Dual Collins HF-9034A HF Transceivers

**LIGHTNING SENSOR:** Honeywell LP-850

**LONG RANGE NAVIGATION:** Triple Honeywell Laseref II IRUs

**NAVIGATION:** Dual Collins VIR-432 NAV Receivers

**RADIO ALTIMETER:** Dual Honeywell RT-300 Radio Altimeter System

**RADIO TUNING UNIT:** Dual Collins RTU-4220 RTUs

**SELCAL:** Motorola SelCal NA138-714B

**STANDBY FLIGHT INSTRUMENT:** Thales Avionics Airspeed 64010-193-1, Altimeter 64111-952-1, Horizon 501-1753-01

**SYMBOL GENERATOR:** Triple Honeywell SG-884

**TERRAIN AWARENESS & WARNING SYSTEM:** Honeywell Mark V EGPWS with RASS & Windshear detection

**TRAFFIC ALERT & COLLISION AVOIDANCE SYSTEM:** Honeywell TCAS 2000 (TCAS II) with Change 7.1

**TRANSPONDER:** Dual Collins TDR-94D upgraded to 622-9210-409 with ADS-B Out

**WEATHER RADAR:** HWU-880 weather radar with control heads on side panels

## CABIN ENTERTAINMENT & COMMUNICATIONS

### ENTERTAINMENT

- Airshow Network
- iPod dock with Audio and Video Inputs
- Dual 14" Monitors (Forward Bulkhead & above Credenza)
- JVC CD Player

### COMMUNICATIONS

- Honeywell MCS 6000 with HD-710 Swift Broadband (will default to Swift 64 if no I-3 satellites available) and Power Amp & CNX-200 Wireless Router
- Handsets in cockpit, galley, cabin, and lavatory transmit through pots port (HD-710)
- Brother Copy/Scanner/Printer



## MAINTENANCE PROGRAMS & INSPECTIONS STATUS

Certification Date: May 27, 1999  
Entered into Service: May 3<sup>rd</sup>, 2000

### MAINTENANCE & INSPECTIONS

- Engines enrolled in Rolls Royce Corporate Care
- APU enrolled in MSP
- Avionics enrolled in HAPP
- MSG-3 Maintenance Program
- CMP Maintenance Tracking Program
- Engines Mid-Life Accomplished in 2008 at Rolls-Royce, Canada
- Ribbon Heater Mod Accomplished in January 2011 at Gulfstream, Appleton





## INTERIOR Forward Cabin

### INTERIOR DESCRIPTION

*(Original Interior, completion by Gulfstream at Dallas, Texas)*

Elegantly appointed 13 passenger floor plan features a four-place club in the forward cabin, a right hand 3-place divan across from a 2-place club in the center cabin, and a right hand credenza across from a 4-place conference group in the aft cabin. A forward (removable) crew toilet and fully appointed aft lavatory and galley completes the interior.



*Forward Cabin looking Aft*



INTERIOR  
Mid Cabin



*Mid Cabin looking Aft*



*Mid Cabin looking Forward*



INTERIOR  
Aft Cabin



*Aft Cabin looking Aft*



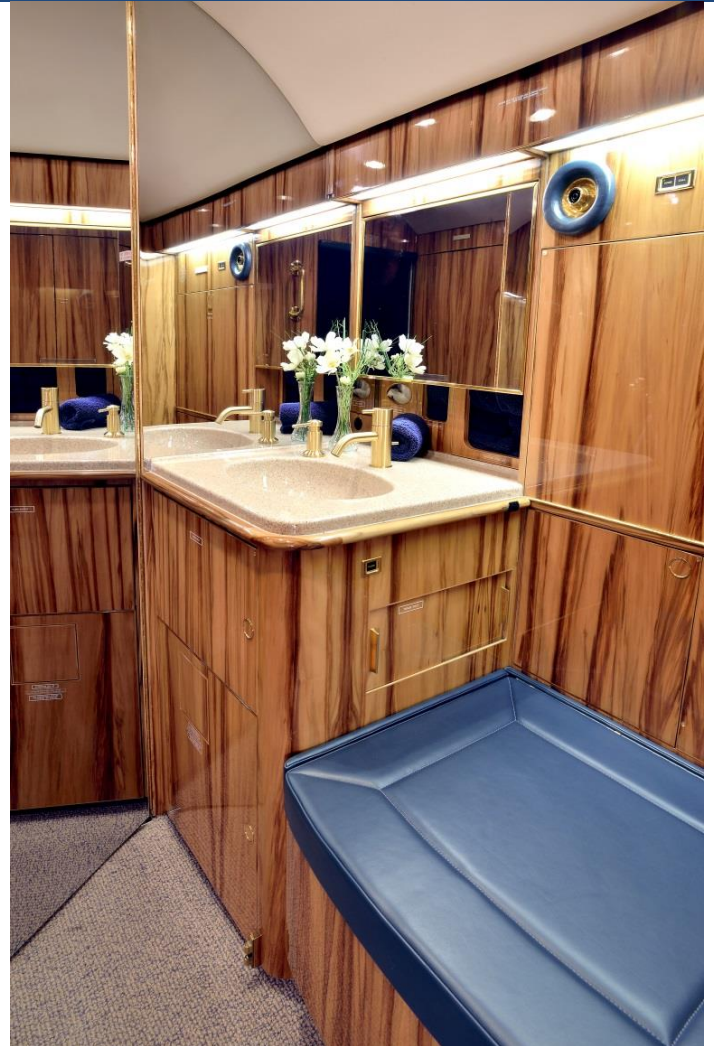
*Aft Cabin looking Forward*



GALLEY & LAVATORY



*Aft Galley*



*Aft Lavatory*

**AFT GALLEY**

- High Temperature Oven
- Whirlpool Microwave
- Dual Krups Coffee Carafes
- Dual Ice Drawers
- Gasper Cooled Food Storage Compartment
- Wine Storage

## EXTERIOR

### EXTERIOR DESCRIPTION

*(Re-Paint by Savannah Air Center, Savannah, GA)*

Upper fuselage base is Bluetone White.  
Lower fuselage base is Bristol Blue, with Antique Gold Accent Stripe.



*This aircraft is being brokered by Guardian Jet, LLC. Prospective purchasers are encouraged to conduct their own independent pre-purchase inspection as Guardian Jet, LLC makes no representations as to the airworthiness of the aircraft or the accuracy of the above information. Specifications subject to verification upon inspection. Aircraft subject to prior sale.*

**2014 10 16 / SL**