



2009 Hawker 900XP N479M S/N HA-0082

Specification and Summary



2009 Hawker 900XP N479M S/N HA-0082



OFFERED AT: \$4,195,000

AIRCRAFT HIGHLIGHTS

Engines and APU enrolled on MSP
B, C & D Inspections complied with 03/2015
Undergoing E, F, G & 96 month inspections
AirCell Axxess II System
AirCell ATG-5000 High Speed Data
WiFi

STATUS: As of August 1st, 2016

TOTAL TIME: 3,531

LANDINGS: 2,204

ENGINES: Garrett TFE731-50R-1H

	#1	#2
Total Time Since New:	3,531	3,425
Cycles Since New:	2,204	2,149
Last MPI (Date / Hours)	03/2015 @ 3,099	03/2015 @ 2,994
Next MPI Due:	6,000	5,994
Next CZI Due:	6,000	6,000
Serial Number:	P-122273	P-122274

Engines enrolled in MSP

APU: Honeywell GTCP36-150

Serial Number: P-1103

Time Since New: 1,911

APU enrolled in MSP

WEIGHTS:

MAX RAMP WEIGHT: 28,120 Lbs.

MAX LANDING WEIGHT: 23,350 Lbs.

MIN OPERATING WEIGHT: 16,100 Lbs.

MAX TAKE-OFF WEIGHT:

28,000 Lbs.

MAX ZERO FUEL WGT:

18,450 Lbs.

MIN ZERO FUEL WGT:

14,120 Lbs.

CAPABILITIES:

RVSM compliant

WAAS Enabled

8.33 kHz Spacing

XM Weather

FM Immunity

Dual IFIS Server

AVIONICS



AVIONICS: Rockwell Collins Pro Line 21 4 Display EFIS System with AMLCD Displays

AIR DATA COMPUTER: Dual Collins ADC-3000 Air Data Computers

ATTITUDE & HEADING REFERENCE SYSTEM: Dual Collins AHC-3000 AHRS System

COCKPIT VOICE RECORDER: Universal CVR-120 Solid State CVR (120 minutes)

COMMUNICATIONS: Dual Collins VHF 4000 Communications Transceivers

DATA LOADER: Collins Data Loader DBU 5000 USB

DISTANCE MEASURING EQUIPMENT: Dual Collins DME-4000 Distance Measuring Transceivers

EMERGENCY LOCATOR TRANSMITTER: Artex C406N ELT System

FLIGHT MANAGEMENT SYSTEM: Dual Collins FMS-6000 Flight Management Systems

GLOBAL POSITIONING SYSTEM: Dual Collins GPS-4000S (WAAS Enabled)

HIGH FREQUENCY: Single HF-9000 High Frequency Radio System

NAVIGATION: Collins Nav-4000 with ADF/VOR/ILS/GS/MBKM and Nav-4500 with VOR/ILS/GS/MBKN

RADIO ALTIMETER: Collins ALT-4000 Radio Altimeter System

SELCAL: Coltech SELCAL

STANDBY INDICATOR: Meggitt MKII Standby Indicator with Air Data Unit

TRAFFIC COLLISION and AVOIDANCE SYSTEM: Collins TTR-4000 TCAS II with Change 7.0

TERRAIN AWARENESS & WARNING SYSTEM: Honeywell MKV Enhanced Ground Proximity Warning System

TRANSPONDER: Dual Collins TDR-94D Mode S Transponders

WEATHER RADAR: Collins RTA-858A Weather Radar Sensor

ADDITIONAL EQUIPMENT:

DUAL IFIS Server

Integrated Electronic Checklist

XM Weather

Satellite ACARS Interface

Single Point Refueling

Dual Panel Cockpit Door

Sealed Lead-Acid Main Aircraft Battery

Drop-Down Inboard Arm Rests

LoPresti Boom Beam Taxi and Landing Lights

CABIN ENTERTAINMENT

- AirCell Axxess II System
- AirCell ATG-5000 High Speed Data
- Dual LCD Monitors
- DVD Player

MAINTENANCE PROGRAMS & INSPECTION STATUS

- Engines enrolled on MSP
- APU enrolled on MSP
- Enrolled on Flight Docs
- B (800 hour), C (1,600 hour) and D (3,200 hour) Inspections complied with March 2015
- E (12 month), F (24 month), G (48 month), and 96 month inspection items currently underway

HAWKER 900XP TECHNICAL DATA

Cabin Height – 5.7 feet
Cabin Width: Max / at Floor Level – 5.9 feet / 4.4 feet
Baggage – 50 Cu. Ft. / 395 Lbs.
Take Off Distance at Sea Level – 4,965 feet
Take Off Distance at 5,000 feet elevation – 6,623 feet
Landing Distance – 2,280 feet
Maximum Altitude – 41,000 feet
Range with 4 Passengers – 2,818 NM
500 NM Flight Time – 1h29
1,000 NM Flight Time – 2h23
Long Range Cruise Speed – 402 knots
High Speed Cruise Speed – 446 knots
Fuel Consumption – 229.42 Gal/hour
Total Variable Costs per hour – \$ 1,606.98

Performance Information from ARGUS International, Inc. Information presented is model based and not necessarily specific to serial number 82

INTERIOR DESCRIPTION

(Original Interior)

Beautiful nine passenger executive interior features a forward 4-place club and an aft 3-place divan facing a single seat. The aircraft is also equipped with an aft lavatory and a forward galley.



Forward Cabin looking Aft

INTERIOR PHOTOS



Forward Cabin looking Forward

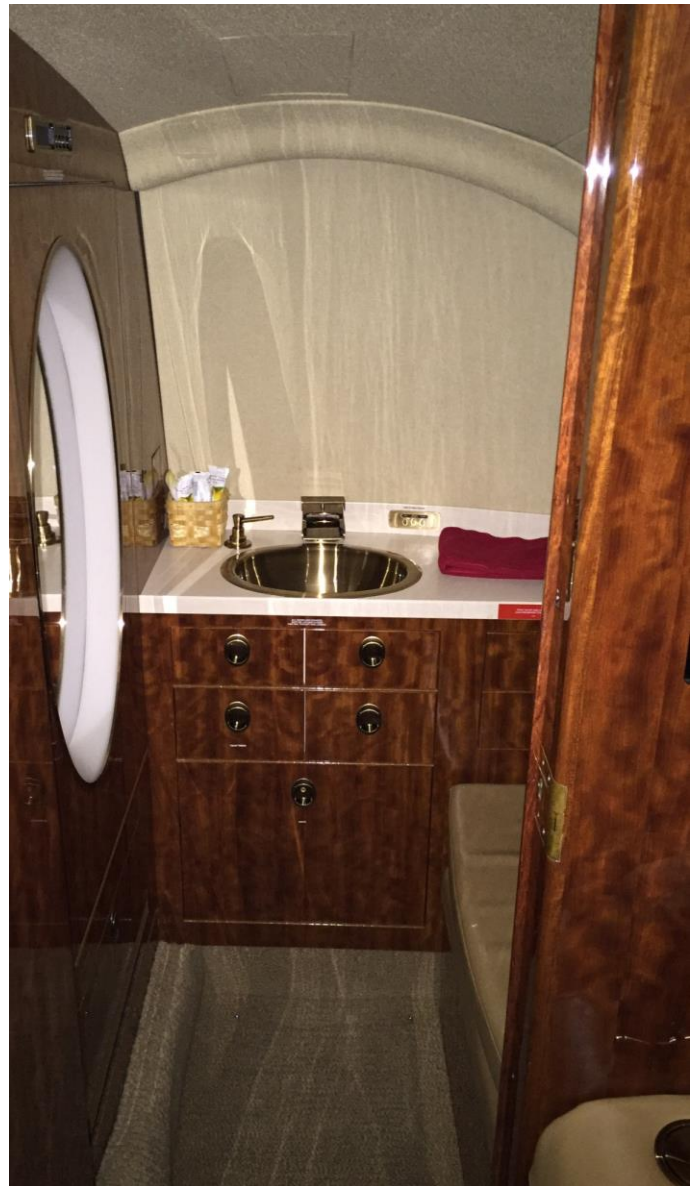


Aft Divan

GALLEY & LAVATORY



Forward Galley



Aft Lavatory

EXTERIOR DESCRIPTION

(Original Paint)

Matterhorn White with Red, Black, Silver and Gray Stripes.



This aircraft is being brokered by Guardian Jet, LLC. Prospective purchasers are encouraged to conduct their own independent pre-purchase inspection as Guardian Jet, LLC makes no representations as to the airworthiness of the aircraft or the accuracy of the above information. Specifications subject to verification upon inspection. Aircraft subject to prior sale.

2016 12 19 / CC